

The DIN logo consists of the letters 'DIN' in a bold, blue, sans-serif font, positioned within a white rectangular box. This box is part of a larger graphic element on the left side of the slide, which includes a blue square above and a white square to the right.

Results from the networking and transfer project CO<sub>2</sub>-WIN Connect

# Standardization – why part of CO<sub>2</sub>-WIN Connect

Dr. Christian Goroncy – Project Manager (DIN)

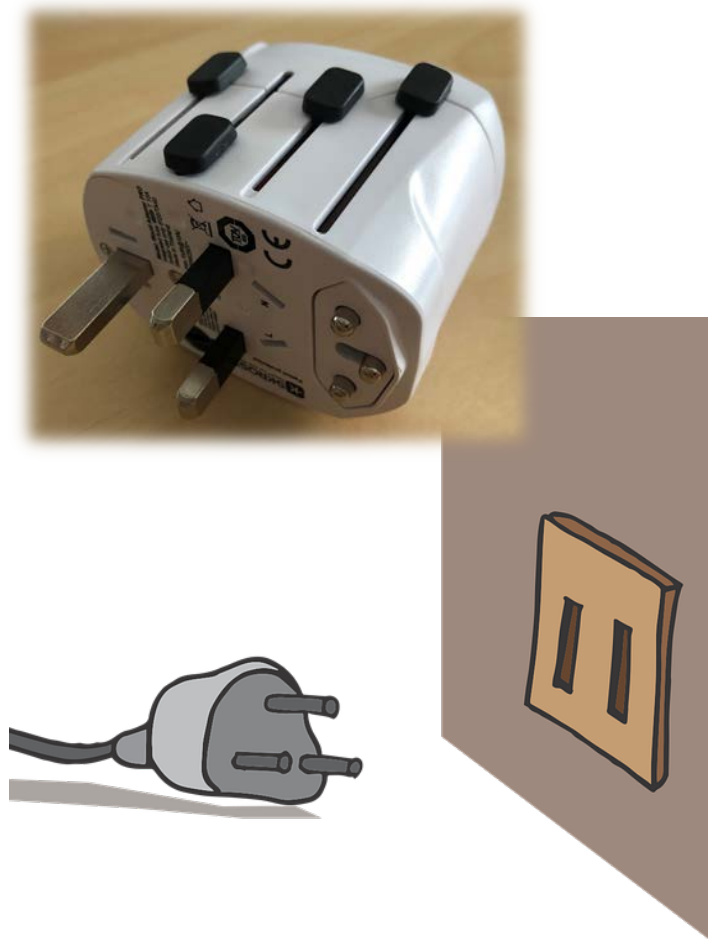
The logo for CO<sub>2</sub>WIN CONNECT features the text 'CO<sub>2</sub>WIN' in a bold, sans-serif font, with 'CO<sub>2</sub>' in green and 'WIN' in blue. Below it, the word 'CONNECT' is written in a smaller, blue, sans-serif font. Underneath 'CONNECT', the text 'SPONSORED BY THE' is written in a small, black, sans-serif font.

Federal Ministry  
of Education  
and Research

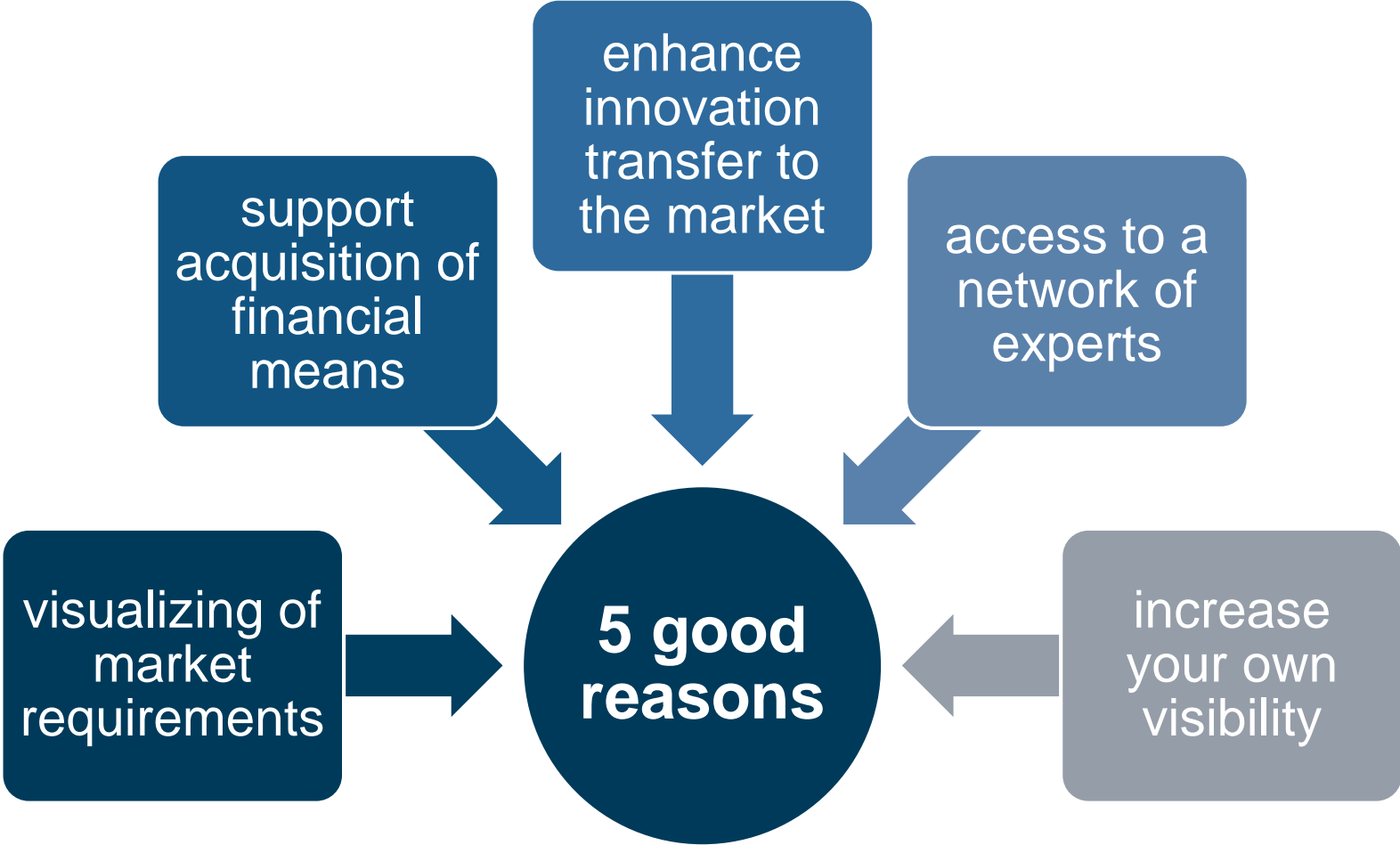
09.06.2021



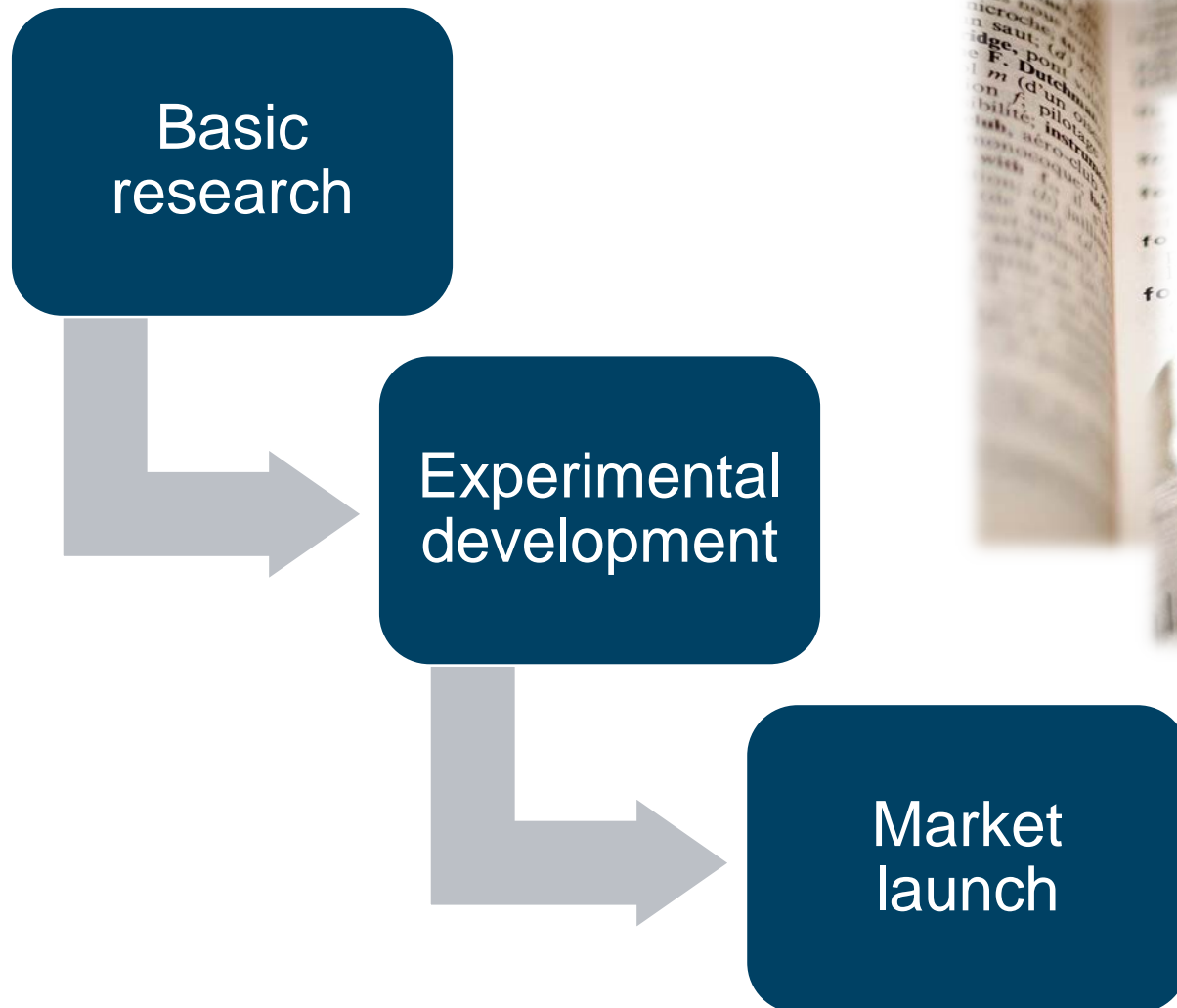
# Why taking care of standardization?



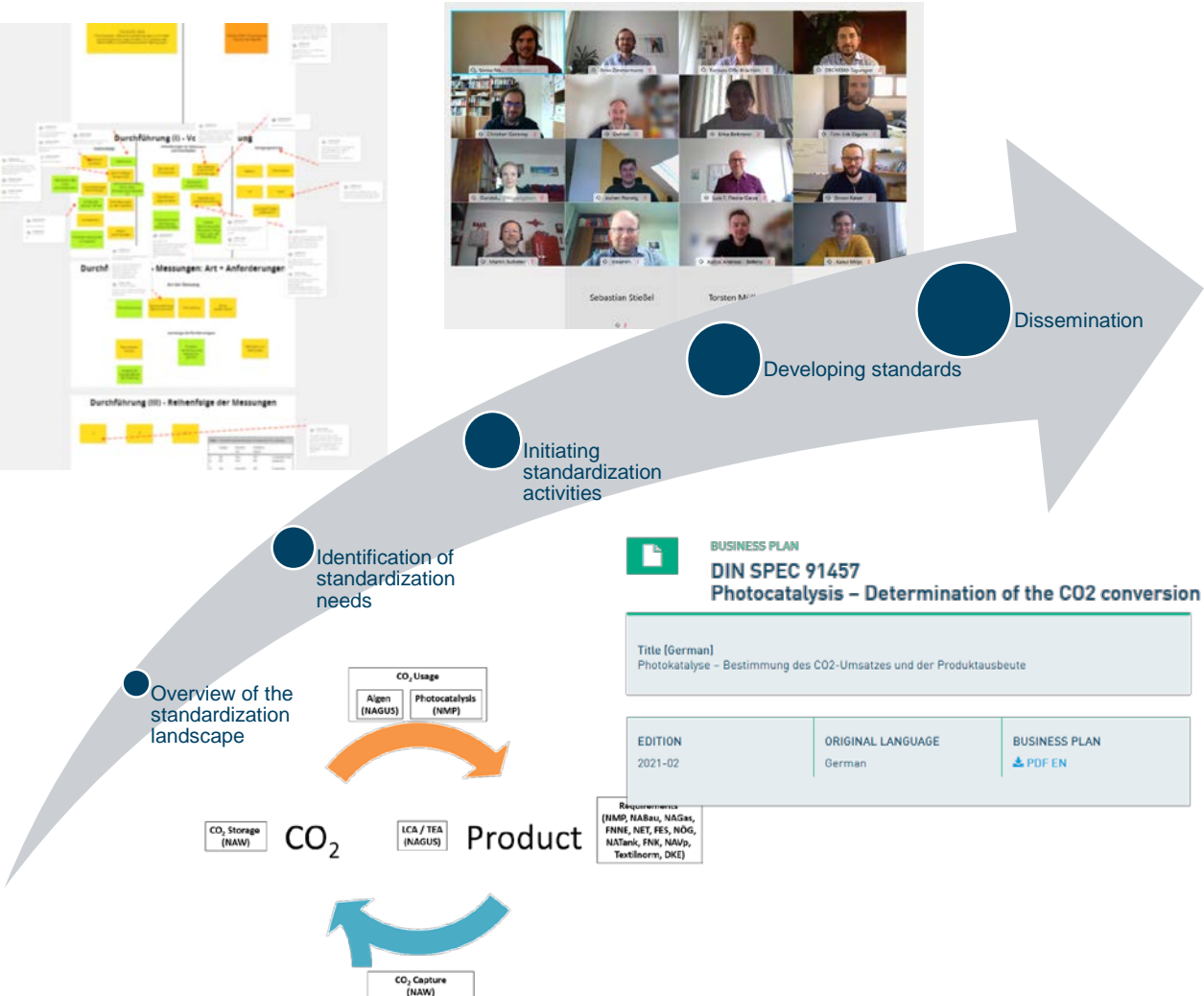
# Why should you consider standardization?



# What can be standardized?



# CO2-WIN Connect – a role model?



**BUSINESS PLAN**  
**DIN SPEC 91457**  
**Photocatalysis – Determination of the CO2 conversion and product yield**

Title (German)  
 Photokatalyse – Bestimmung des CO2-Umsatzes und der Produktausbeute

EDITION 2021-02	ORIGINAL LANGUAGE German	BUSINESS PLAN PDF EN
--------------------	-----------------------------	-------------------------

Requirements  
 (HIMP, MABau, MABer, FNNE, NET, FES, NOG, NATank, FNK, NAVp, Textilnorm, DKE)

**CONTACT**  
 Dr.  
**Christian Goroncy**  
 Seestwinder Damm 42/43  
 13627 Berlin  
 Tel.: +49 30 2601-2543  
 Fax: +49 30 2601-42543  
 Send message to contact >





# CO2-WIN Connect – what to come?



## Consulting on behalf of standardization

- Support regarding standardization issues
- Evaluate potential standardization ideas



## Identification of further standardization needs

- Exchange with the projects (Standardization workshop / webinar )
- Screen project findings



## Developing new standards

- DIN SPEC 91457 – Photocatalysis Measurement
- DIN SPEC 91458 – Terminology CCU



## Transfer findings

- Promote findings to relevant stakeholders
- Contribute to ongoing standardization work



**Dr. Christian Goroncy**  
**Project Manager**

Christian.Goroncy@din.de

+49 (0) 30 2601-2453

**In case of any questions, please do not hesitate to contact us!**

DIN

Deutsches Institut für Normung e. V.  
Saatwinkler Damm 42/43  
13627 Berlin

[www.din.de](http://www.din.de)



**CO<sub>2</sub>WIN**  
**CONNECT**

SPONSORED BY THE



Federal Ministry  
of Education  
and Research